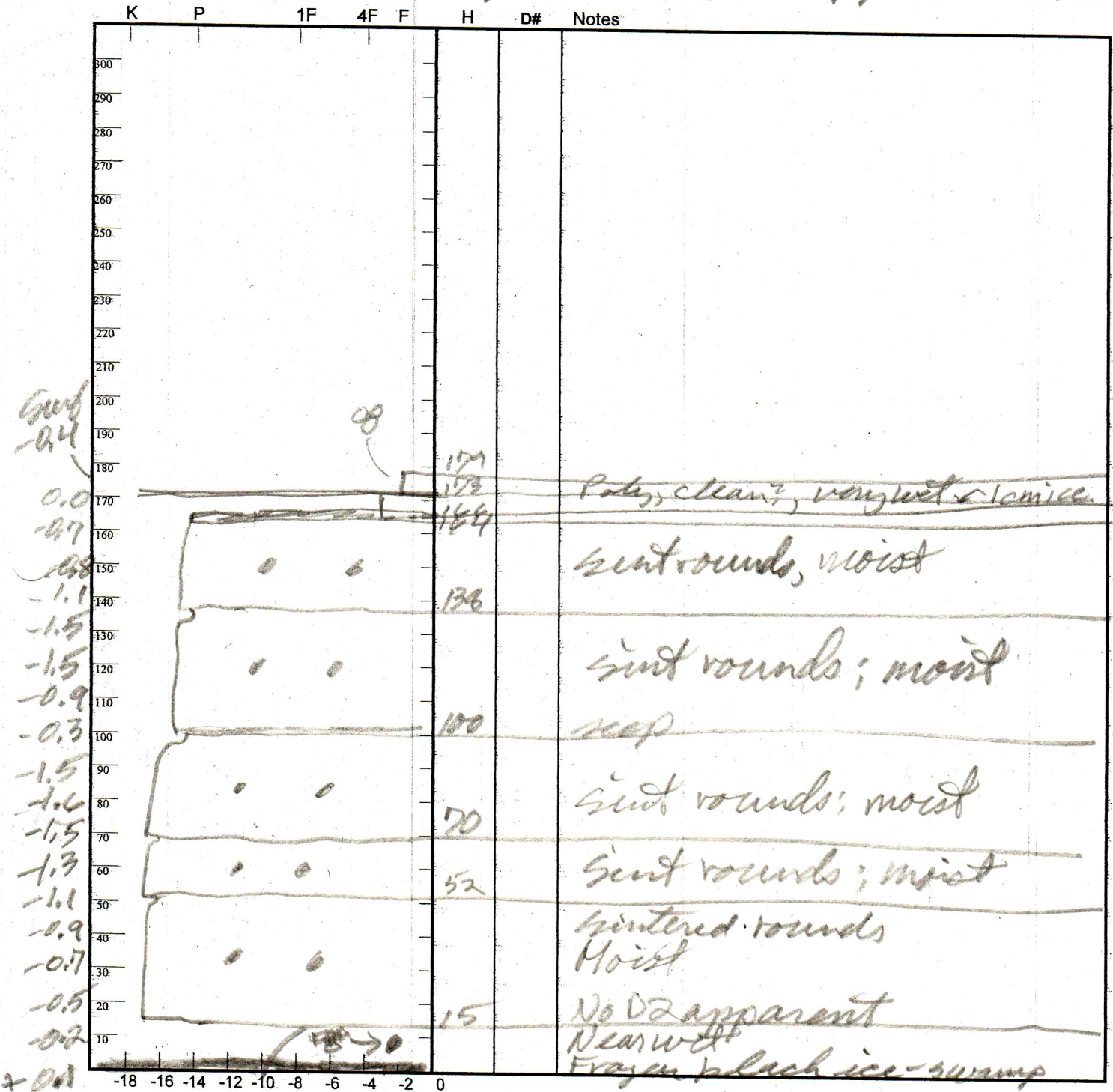


Observers: Cl. 106 **CODOS Snowpack Profile** Date: 3/20/09
 Location: Rabbit Ears W Elev. 9,400 Aspect: SW Boot Pen: 10 cm \angle : 3° Time: 1830 MDT
 Prior Obs: 1-1-1 Air T: -1 °C Sky: 0 Precip: Nil Wind: Nil Notes: Only vague, faint of D₂/4/3 in top 15 cm? Quite apparent E side



Surf -0.4
 0.0
 -0.7
 -0.8
 -1.1
 -1.5
 -1.5
 -0.9
 -0.3
 -1.5
 -1.6
 -1.5
 -1.3
 -1.1
 -0.9
 -0.7
 -0.5
 -0.2
 +0.1

Sun just set

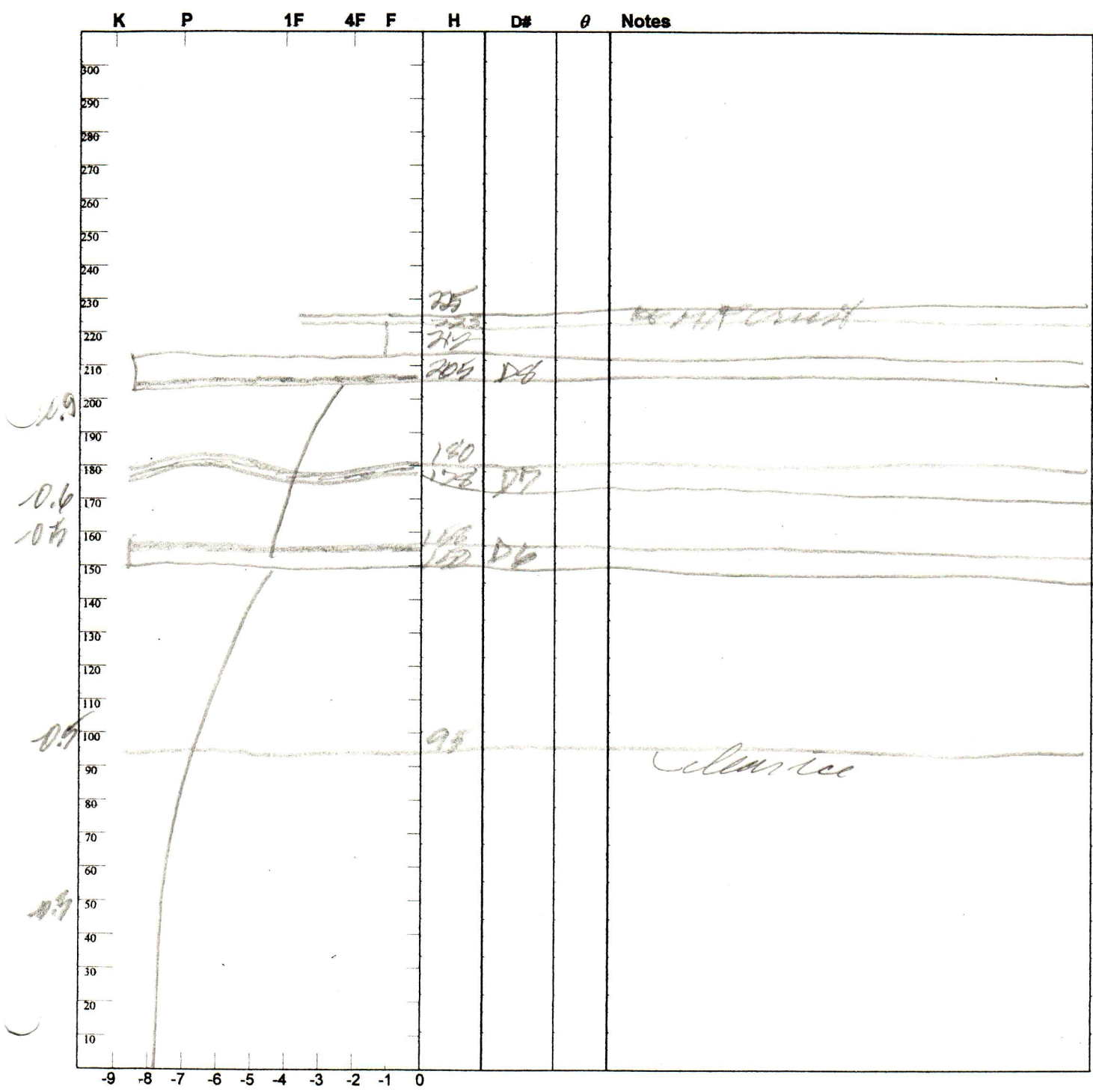
Observers: CL, JP, AB, MS

CODOS Snowpack Profile

Date: 4, 19, 09

Location: Rabbit Ears Elev: 9,400' Aspect: WNW Boot Pen: 13 cm \angle : ° Time: 1415 MDT

Prior Obs: / / Air T: °C Sky: ☉ Precip: 91 Wind: Nil Notes:



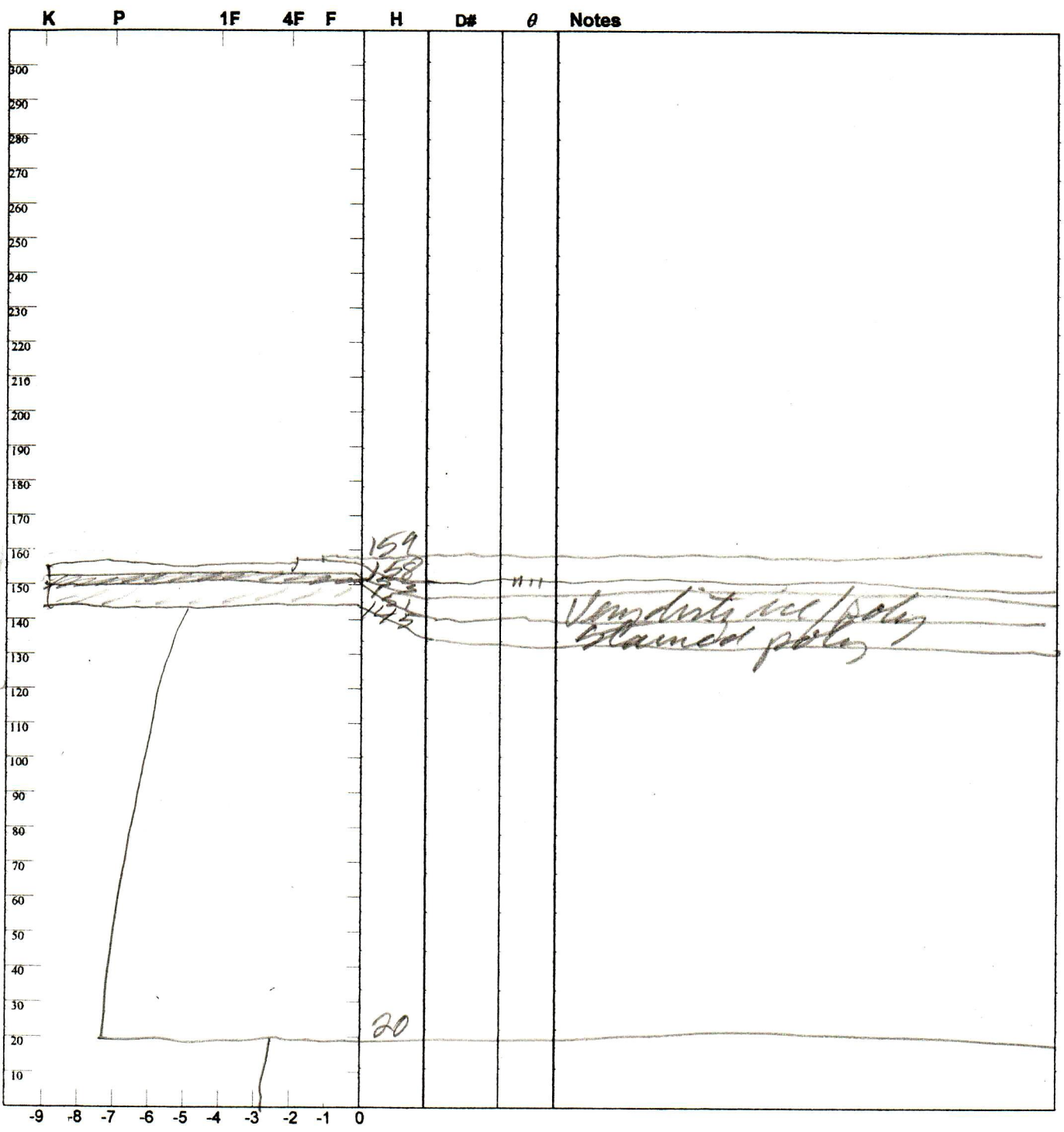
Observers: Ch, AB, MS

CODOS Snowpack Profile

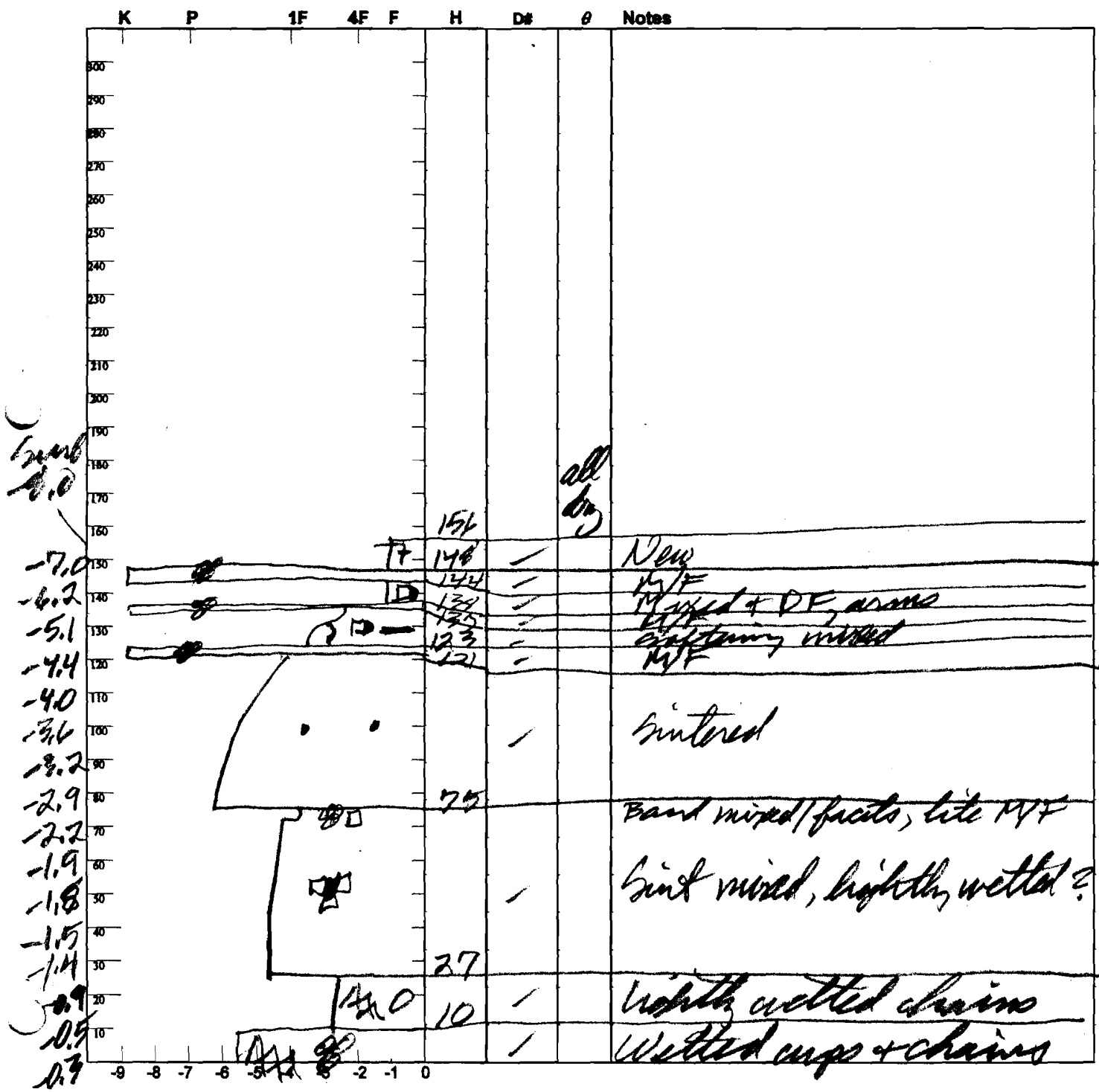
Date: 5.10.09

Location: Rabbit Ears Elev. _____ Aspect: _____ Boot Pen: _____ cm, \angle : _____ ° Time: 0930 MDT

Prior Obs: 1 1 Air T: _____ °C Sky: ① Precip: Nil Wind: Nil Notes: 1-2 cm new last night

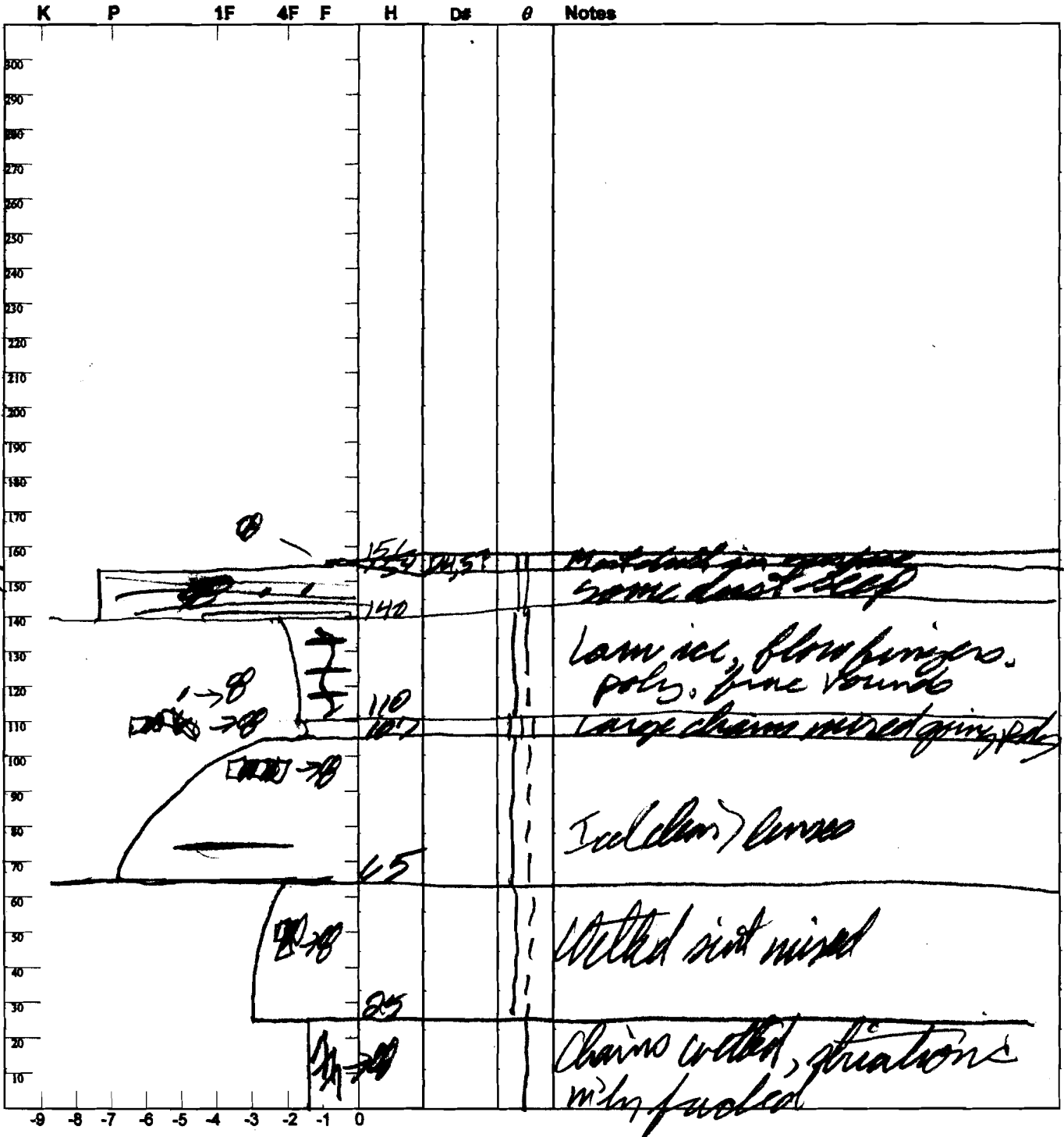


Observers: CLG AT **CODOS Snowpack Profile** Date: 3/24/10
 Location: Rabbit Ears Pass Elev. 9,400 Aspect: NW Boot Pen: 25 cm 2.5 ° Time: _____ MDT
 Prior Obs: 1/1 Air T: _____ °C Sky: ☁ Precip: 5 Wind: LT Notes: Aspect = 320°
No dust at all; swampy deep stain upward @ basal layer



Observers: CL, AT, HB, MS, AP CODOS Snowpack Profile Date: 4/15/10
 Location: Rabbit Ears Pass Elev. 9,400 Aspect: 340 Boot Pen: 1 cm \angle : 2° Time: 1050 MDT
 Prior Obs: 3/24/10 Air T: +7 °C Sky: ① Precip: Nil Wind: Nil Notes: _____

Snow
 -0.1
 -0.2
 -0.7
 0.1
 0.1
 -0.1
 0.1
 0.1
 0.1
 0.1
 0.1
 0.1
 0.1



Observers: CL, AT, PE, M, AP CODOS Snowpack Profile

Date: 5/6/10

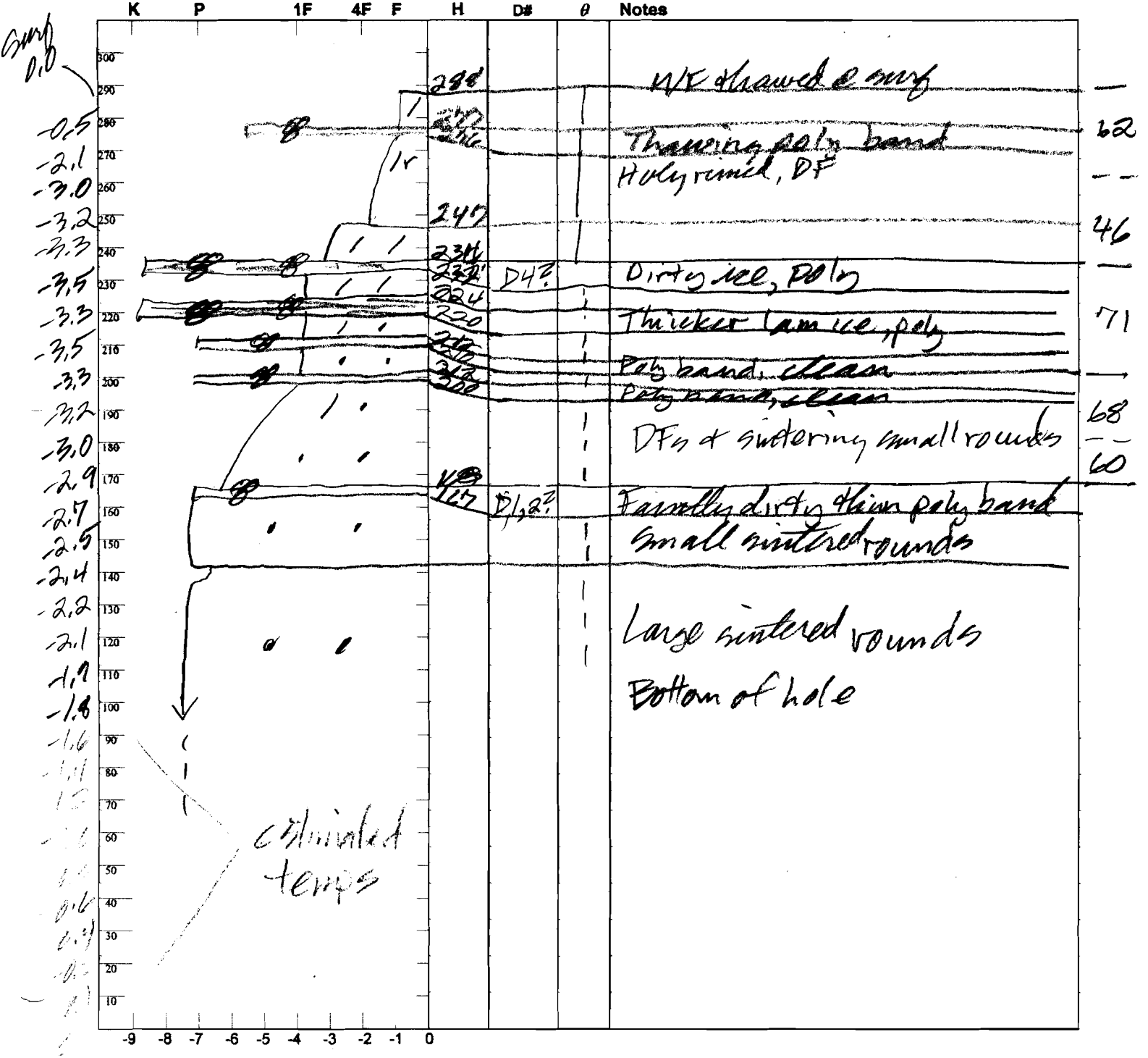
Location: Rabbit Ears Elev. _____ Aspect: _____ Boot Pen: _____ cm \angle : _____ ° Time: 20930 MDT

Prior Obs: 4/15/10 Air T: _____ °C Sky: ☉ Precip: 474 Wind: 1st Notes: heavy rain

during storm; Kelly cutter samples collected in top 50-60 cm only

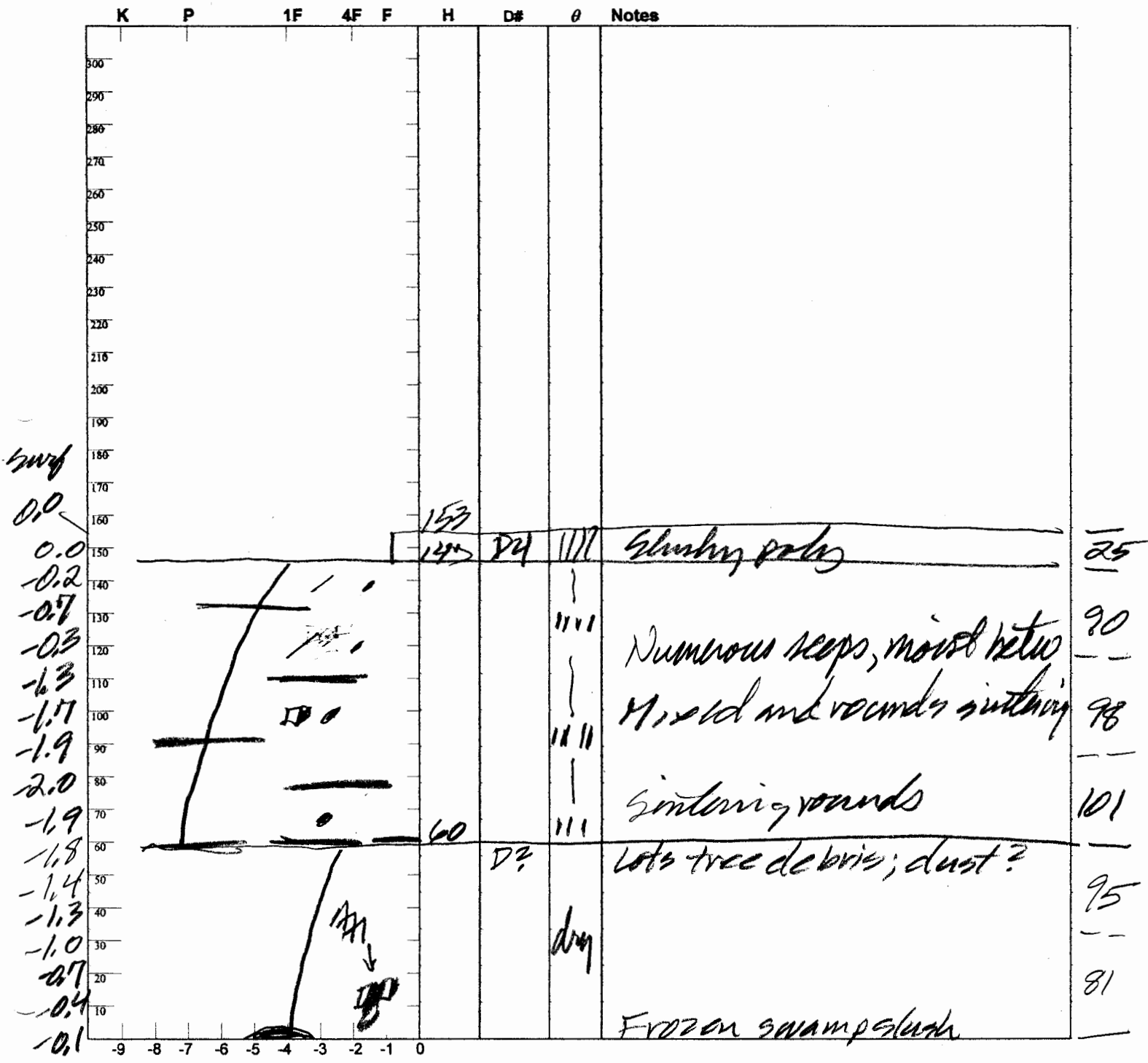
K	P	1F	4F	F	H	D#	θ	Notes	
300									
290									
286									
270									
260									
250									
240									
230									
220									
210									
200									
190									
180									
170					167				
160					158			New - heavy rain, rain? tan, light dust seen prior to @	
150						1507		rounds going pale, surface	
140					139				
130						134			
120								↑DFR merged	
110									
100									
90									
80									
70									
60									
50									
40									
30									
20									
10									
-9	-8	-7	-6	-5	-4	-3	-2	-1	0

Observers: CL **CODOS Snowpack Profile** Date: 4/1/11
 Location: Rabbit Ears Pass Elev. 9,450 Aspect: 340 Boot Pen: 24 cm \angle : 3° Time: 1235 MDT
 Prior Obs: 1-1-1 Air T: °C Sky: 0 Precip: Nil Wind: Nil Notes:



Observers: CL4AT CODOS Snowpack Profile Date: 3.15.12
 Location: Rabbit Ears Pass Elev. 9,400' Aspect: WNW Boot Pen: 8 cm \angle : 3° Time: 1640 MDT
 Prior Obs: 1-1-1 Air T: 7.8 °C Sky: 0 Precip: Nil Wind: Nil Notes: SWFA = 490mm
 $H_2O = 1.52m$; $\bar{\rho} = 322 kg/m^3$

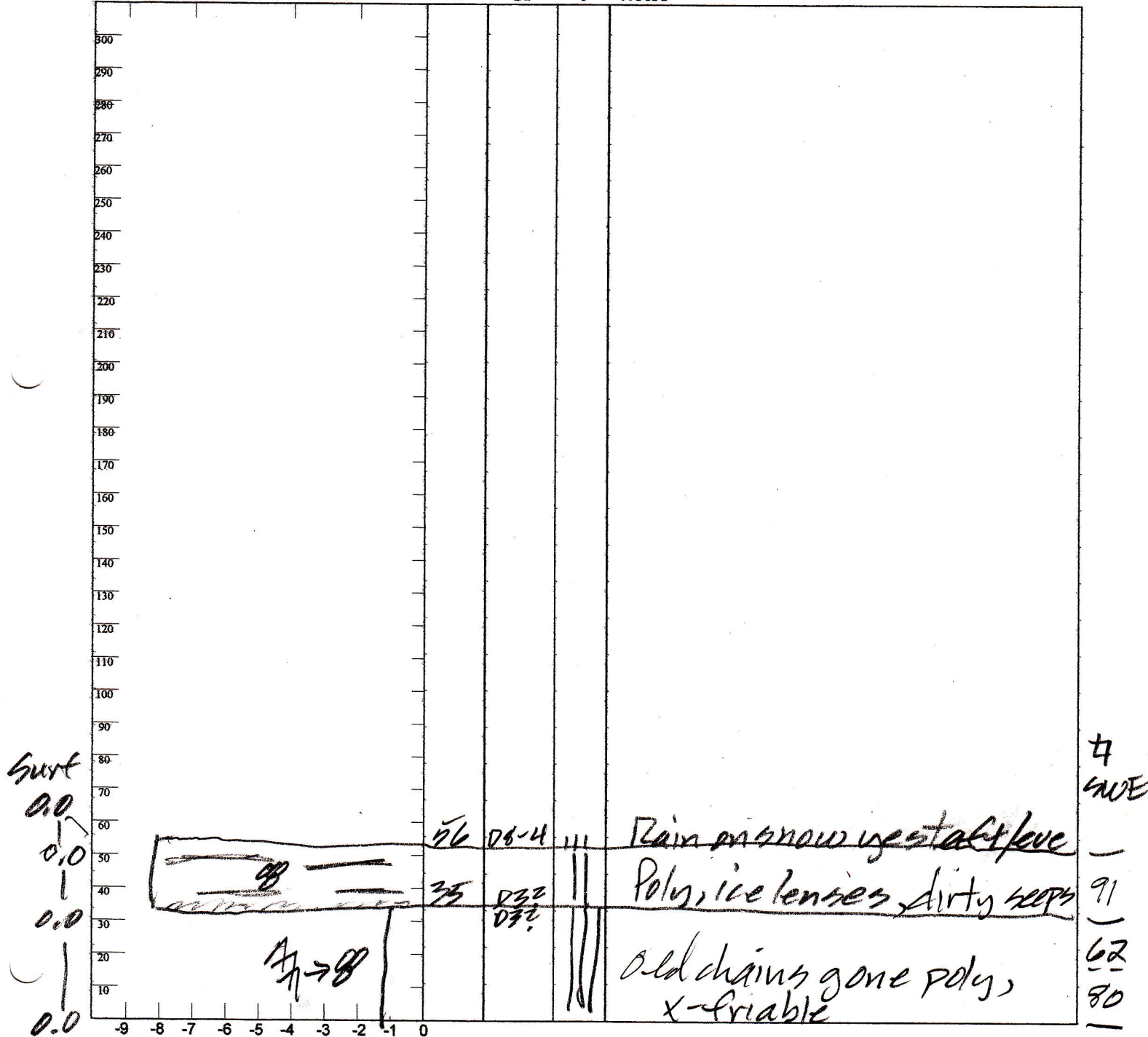
Surface is suncupping, rilling, and shows small penitente features typical of dust in new snow



$T = -1.0$

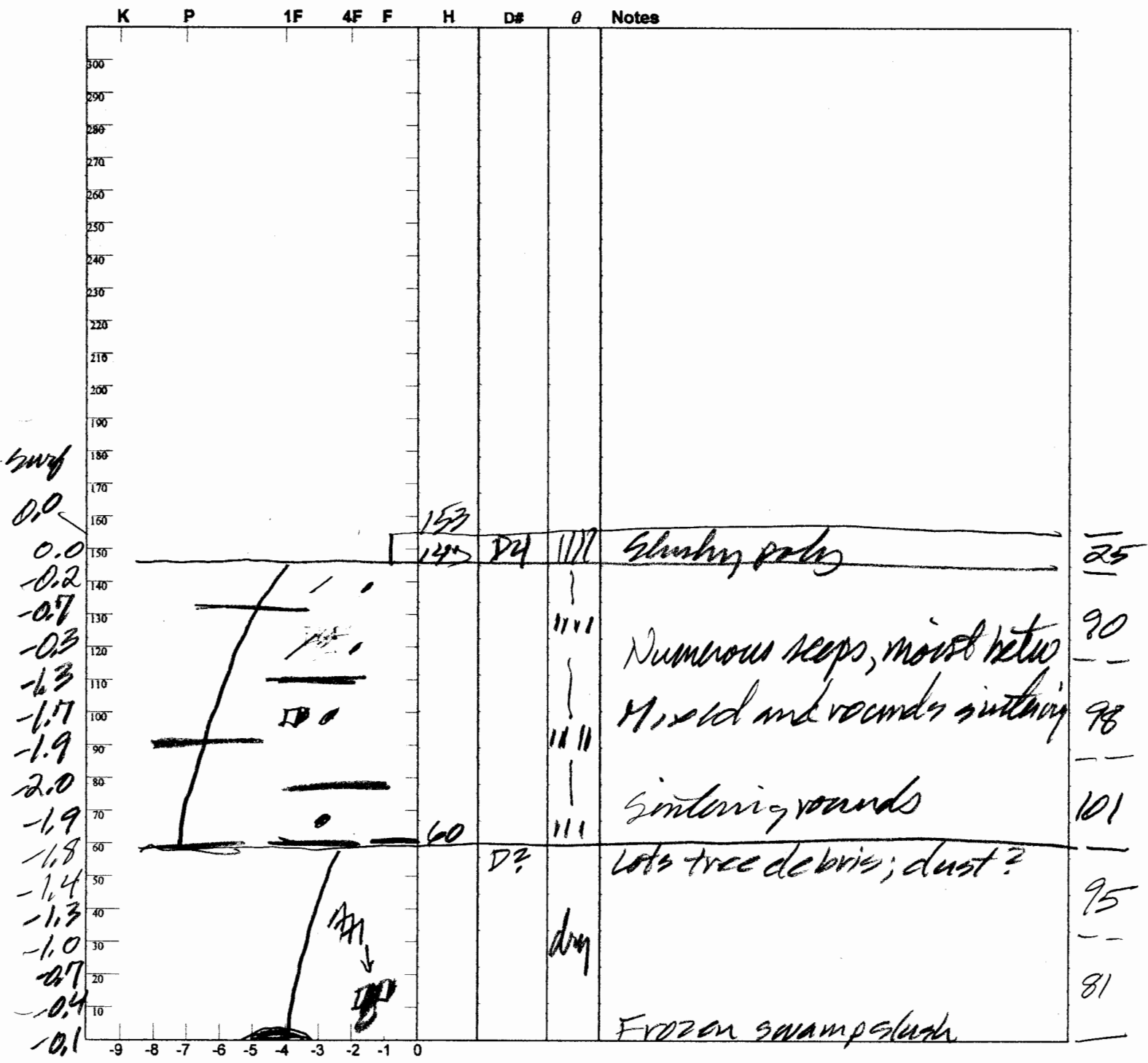
Observers: CL+KB **CODOS Snowpack Profile** Date: 5.2.12
 Location: Rabbit Ears Pass Elev. 9,400' Aspect: NNW Boot Pen: 1,45 cm \angle : 3 ° Time: 0930 MDT
 Prior Obs: 4.10.12 Air T: +5 °C Sky: ☉ Precip: Nil Wind: Nil Notes: H₅₇ = 0.59 m
SWE₇ = 233 mm ; ρ = 395 kg/m³

K P 1F 4F F H D# θ Notes



Observers: CLLAT **CODOS Snowpack Profile** Date: 3/15/12
 Location: Rabbit Ears Pass Elev. 9,400' Aspect: W Boot Pen: 0 cm \angle : 3° Time: 11:40 MDT
 Prior Obs: 1-1-1 Air T: 7.8 °C Sky: 0 Precip: Nil Wind: Nil Notes: SWE = 490mm
H₂O = 1.52m; $\rho = 922 \text{ kg/m}^3$

Surface is suncupping, filling, and shows small penitente features typical of dust in new snow



$T = -1.0$

Observers: CL **CODOS Snowpack Profile** Date: 3, 20, 13
 Location: Rabbit Ears Pass Elev. 9,400' Aspect: NNW Boot Pen: 9 cm \angle : 4° Time: 0815 MDT
 Prior Obs: -1-1-1 Air T: -10 °C Sky: 0 Precip: Nil Wind: Nil Notes: H₂O = 1.73 m
SWE = 555 mm = 21.45"; $\rho = 321 \text{ Kg/m}^3$; mean SMT = -3.9°C

Hints of D4 in uppermost M/F; much clearer in valley floor

